

JUUKO
M-Series
Transmitter

.....



.....

Catalog

M-Series Features	1
Black Box	2
Automatic Channel Switching (ACS)	3
Multi-control System	3
Zero-G Safety	4
Roll-over Protection	4



QI Wireless Charging Compatible	5
MyMODE: Always in Safe Hands	6
Data Feedback	7
My Drive, My Secretary	7
Technical Data	8
Applications	10





M-Series Features

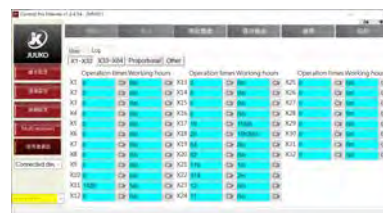
- Independent LEDs, indicate the status of the battery
- Activation of the transmitter is protected by an electronic key-code and an auto shut-off option which is programmable
- The system automatically change to another frequency in the presence of radio interference
- Eco power management system. Save on batteries
- It can receive and display via 12 LEDs signals coming from the receiver (relay action feedback)
- Mushrooms type EMO button
- Internal BootLoader, up firmware to the date by using computer
- Qi wireless charging compatible

Black Box

Track your crane or machine usage

With JUUKO Black Box function, you can always collect the usage data of both transmitter and receiver. This function is good for the hoist service and maintenance work, and also for those companies who provide lease or rent out service.

It is more than simple to see the usage data of both Transmitter and Receiver just by connecting the transmitter to the JUUKO's "Control pro" configuration software.



Automatic Channel Switching (ACS)

A system comes standard with a primary working frequency and a secondary working frequency. Automatic Channel Switching (ACS) allows continuous operation free from interference for the user. When radio interference occurs during normal operation, the radio communication automatically switch to the the secondary frequency.

- Bi-directional
- Safe communication
- Uninterrupted radio link benefits smooth operation

Multi-control System

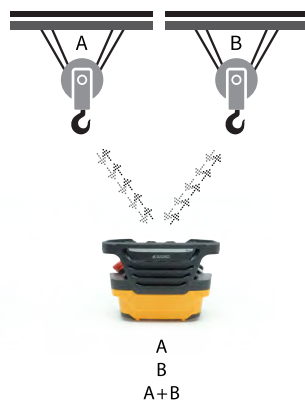
① MASTER / SLAVE



② PITCH & CATCH



③ TANDEM



Zero-G Safety

The zero-g safety function can prevent the uncontrolled output of commands in specific emergencies.

The G sensor can detect if the transmitter receives a hard impact, dropped or thrown. These features can deactivate either the complete radio system or only the safety-relevant function relays.

Roll-over Protection





Qi Wireless Charging Compatible

Farewell, power cords

Frustrated with messy, often incompatible cables? Qi charging technology cuts the cord for your devices - finally, they are truly wireless.

Charged and ready to go

The leading wireless charging standard, Qi has been embraced by hundreds of leading manufacturers.



MyMODE: Always in Safe Hands

JUUKO "MyMODE" allows you to set restricted controlling mode settings in your crane or machine system that promote safe and responsible controlling. You can limit top speed, Multi-control System, transmitting power and more.



- Speed Limited: 60%
- Multi Control: 1, 1+2, 2
- Activate Relay: Y1 Y3 Y4...



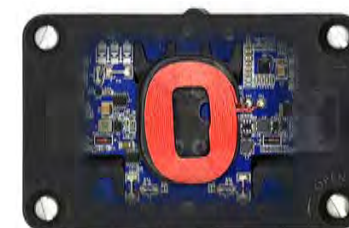
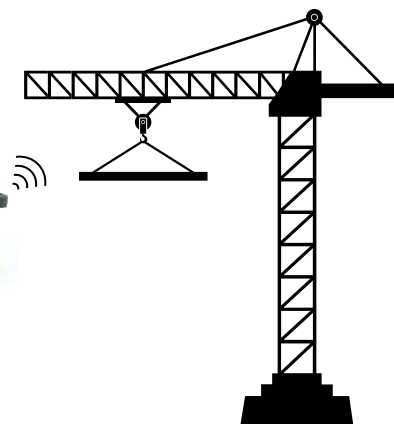
- Speed Limited: 40%
- Multi Control: 1, 2+3, 3
- Activate Relay: Y1 Y2 Y3 Y4...



- Speed Limited: 100%
- Multi Control: 1, 1+3, 5
- Activate Relay: Y1 Y2 Y4 Y5...



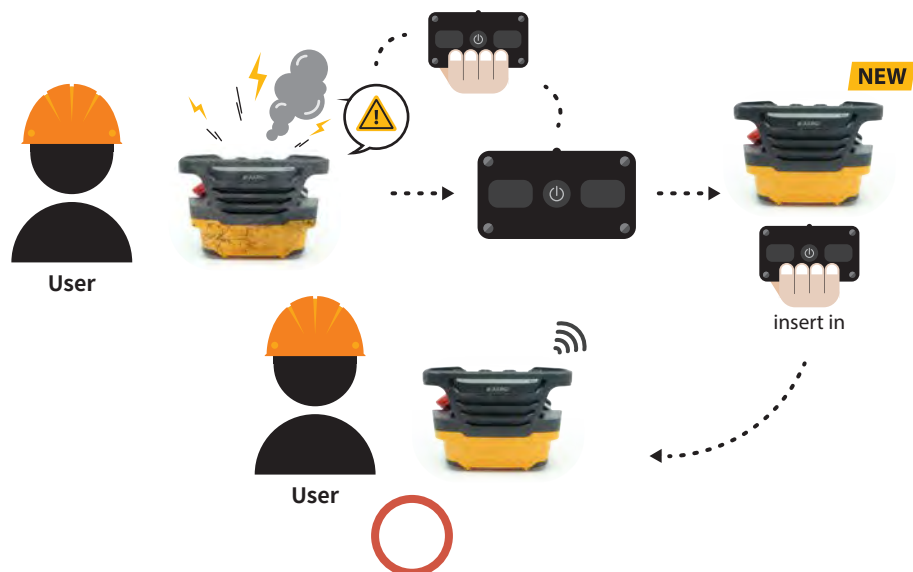
- Speed Limited: 30%
- Multi Control: 1, 2+2, 4
- Activate Relay: Y1 Y2 Y6...



MyMODE

My Drive, My Secretary

"My DRIVE" offers the user to activate a spare transmitter in just a minute. Users simply bring the original battery bay and insert it to the spare transmitter.



Data Feedback

The "Data Feedback" function enables the visualization of status through 12 LEDs. These 12 LEDs are programmable to see the actual STATUS of each relay in receiver.

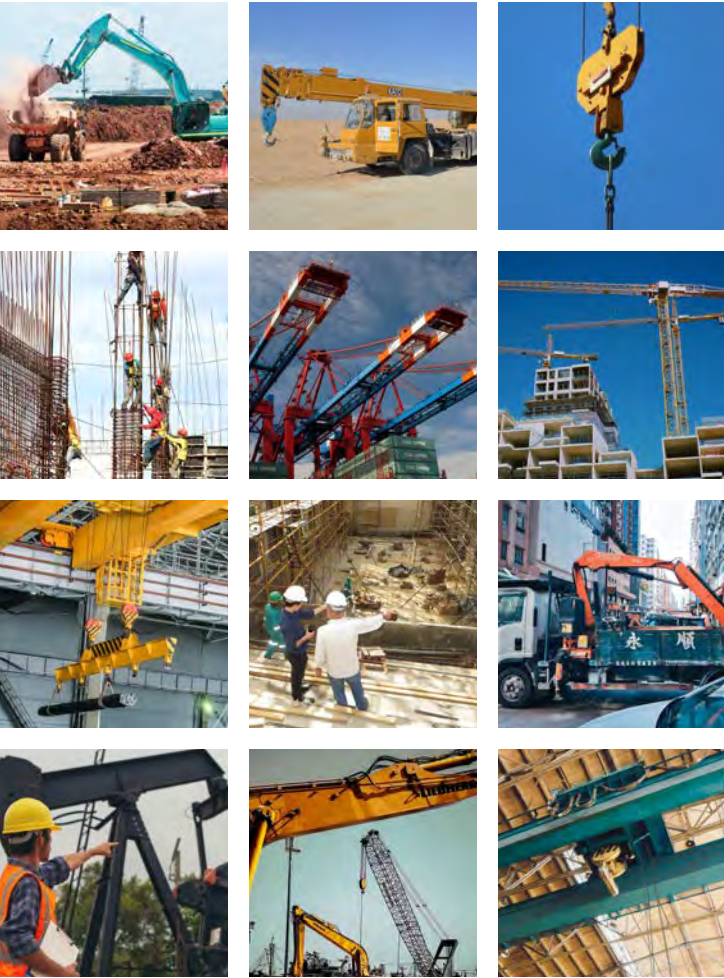


Technical Data

Layout 2* Joystick, 6* Paddle & Switches	Weight (including battery) approx. 1036g	Dimensions 200×141.3×139mm
Frequency band 418 / 429 / 433 / 447 / 470 / 915 MHz / 2.4 GHz		Power supply LR6(AA)1.5V / NiMH(AA)1.2V x4
Channel space 12.5 kHz		Stop command response time ~ 50 ms
Number of available on/off command max. 24 + Start and EMO		Command response time ~ 50 ms
Hamming distance ≥ 15		Protection degree IP65
Radio communication bi-directional		Operating and storage temperature (-25°C)~(+55°C) / (-40°C)~(+85°C)
Frequency handling Automatic and dynamic switching between 2 channels		Housing material PA66 (GF30%)



Applications



Transmitter

www.juuko.ca

*Enjoy
controlling!*

 JUUKO

M Series