

MG23 - SERIES



BEARINGLESS INCREMENTAL ENCODER Ø 22 MM

Encoder with synchro flange

- High ingress protection class IP68
- Non-contact measuring principle
- No wearing parts with long useable life
- Small dimensions & Flat design

Standard: 7-35Vdc Power Supply, 100kHz
2 Square Wave Signals up to 1024 ppr

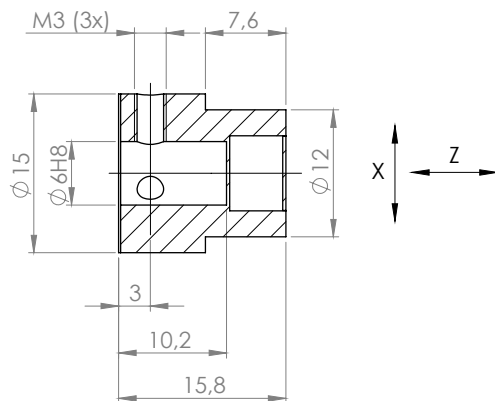
Options: Marker pulse with LED indication
Status output with alarm function
Extended warranty up to 48 months



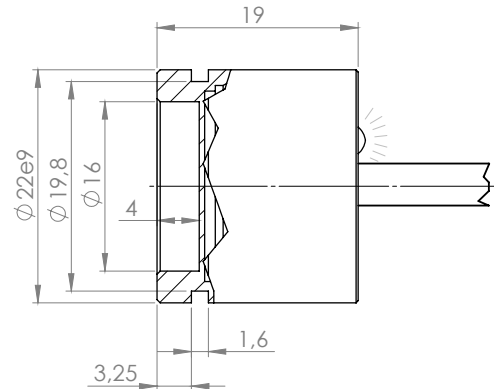
*Flexible and durable
encoder for demanding
applications*

MAGNETIC CARRIER UNIT (ROTATING)

MAGNET ACCESSORY PART NO. 106001



PICK-UP UNIT (STATIONARY)



MOUNTING TOLERANCES

Z = 1 ± 0,5 mm

X = 0 ± 2,5 mm

ELECTRICAL SPECIFICATION, STANDARD

Power supply	7–35 Vdc
Current consumption	Max 40 mA, without load
Output circuit	Line driver
Low level output volt	Max <0,5 V at 20 mA load and 20°C
High level output volt	Min >Vcc-2V at 20mA load and 20°C
Short circuit protected	Yes (thermal)
Polarity protected	Yes
Transient protected	Yes
Max load	70 mA

CONNECTION

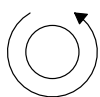
1	Axial cable 0.25mm ² , 1 m length
1XU	Axial cable 0.25mm ² , free cable length, X = No. meters
1XT	Axial cable 0.5mm ² , free cable length, X = No. meters
59	Axial, cable 16cm with 4 pin M8 connector
74	Axial, cable 15cm with 4 pin M12 connector

STATUS OUTPUT / DIAGNOSTIC OUTPUT

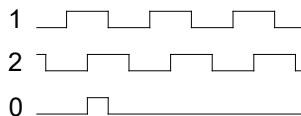
Status output Active high, (magnet is within tolerance)

OUTPUT SIGNALS, MG23A & MG23C

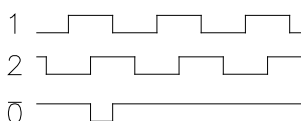
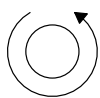
CCW rotation seen from shaft end



(MG23B)



OUTPUT SIGNALS, MG23N (0-PULSE INVERTED)



SIGNAL ACCURACY

Resolution	1 to 1024 ppr
Max frequency	100 kHz
Operating temperature	-40° to +70°C

MECHANICAL SPECIFICATION

Housing material Aluminum, electrically conductive for increased interference protection

Encapsulation class	IP68 (IEC 60529)
Max. rotational speed	9000 rpm
Vibration	50g 20-2000 Hz (IEC 60068-2-6)
Chock	200g at 11 ms (IEC 60068-2-27)
Weight	Approx. 30 g (without cable)

FUNCTION

Model	MG23A	MG23B	MG23C	MG23D	MG23N
1	Green	Green	Green	Green	Green
2	Yellow	Yellow	Yellow	Yellow	Yellow
0	NC	Gray	NC	Gray	NC
0 invert	NC	NC	NC	NC	Gray
+V	Brown	Brown	Brown	Brown	Brown
0V	White	White	White	White	White
STATUS	NC	NC	Gray	NC	NC

Model	MG23A-X-X-1XT	MG23A-X-X-59	MG23A-X-X-74
1	White	Blue	Blue
2	Black	Black	Black
+V	Red	Brown	Brown
0V	Blue	White	White

ORDERING CODE

	MG23X	X	XXXX	XX
Model	_____	_____	_____	_____
Option	_____	_____	_____	_____
Pulse rate (1-1024)	_____	_____	_____	_____
Connection	_____	_____	_____	_____



Skogsvägen 1, SE-645 34 Strängnäs, Sweden
 Tel: +46 152 33 11 90. Fax: +46 152 33 11 91
 E-mail: info@emeta.se
 www.emetaencoders.com